

Honorbuddy



24.11.09 V1.0.0

I . Programs needed

Net Frameworks 3.5 INSTALL ONLY THE ENGLISH VER. (**DE is troubling**)

<http://www.microsoft.com/downloads/details.aspx?FamilyId=333325FD-AE52-4E35-B531-508D977D32A6>

dotnetfx cleanup tool – will remove your previous NET 3.5

<http://blogs.msdn.com/astebner/pages/8904493.aspx>

Netfx setupverifier - verifies and repairs your NET Framework

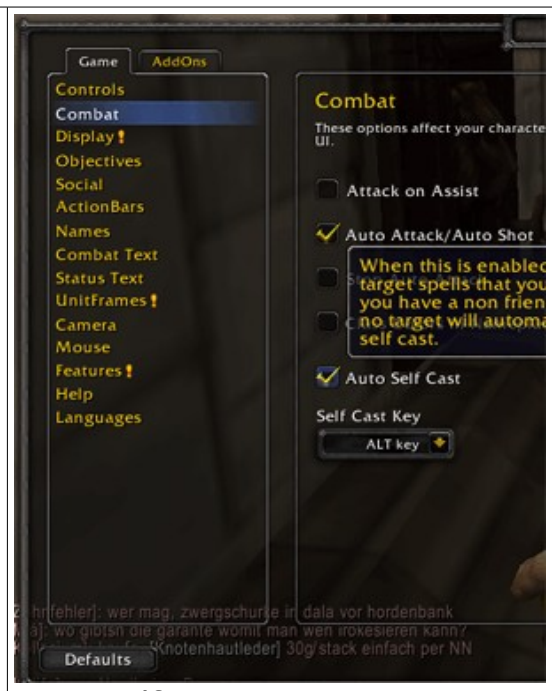
<http://blogs.msdn.com/astebner/pages/8999004.aspx>

II . Ingame Settings

- **RESET → Keybindings to Default ESC → Interface → Keys**



Auto Loot on



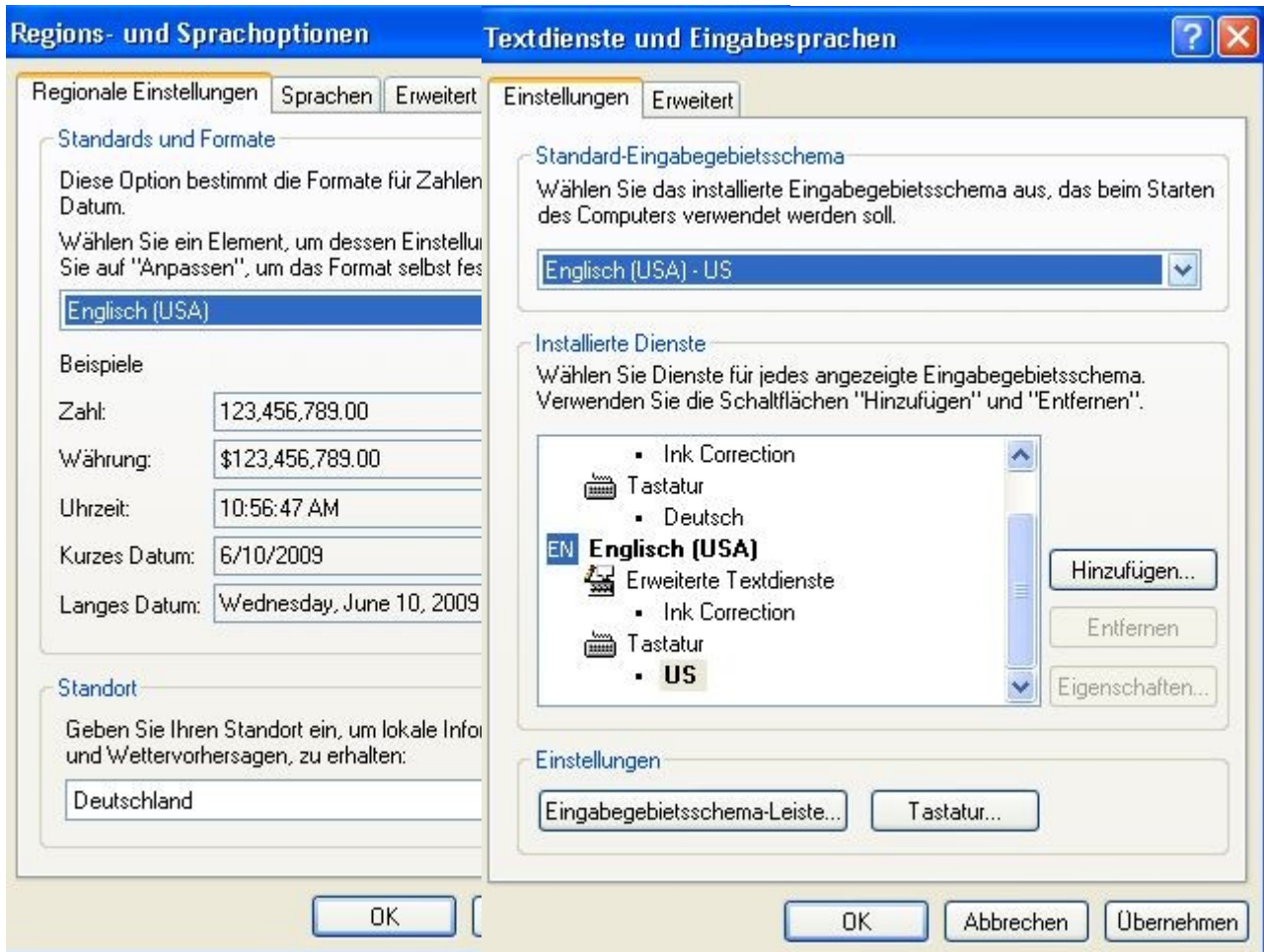
Auto Selfcast on


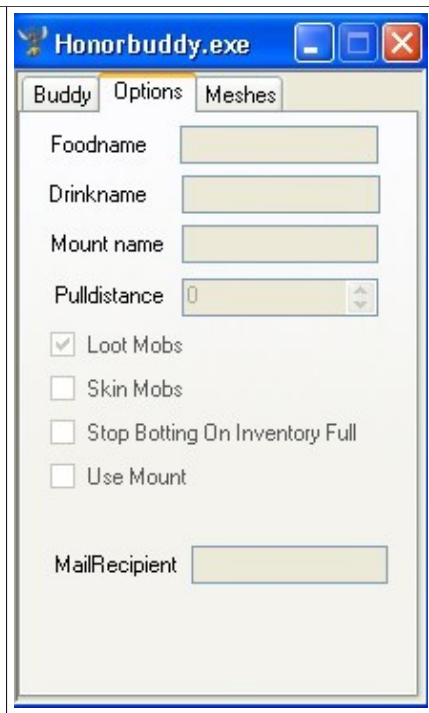



Click-to-Move on

- **RESET → Keybindings to Default ESC → Interface → Keys**

WINDOWS Settings (Language! & Number Format! have to be set to English (US) in Windows)



 <p>The screenshot shows the 'Buddy' tab of the Honorbuddy application. It features a message box at the top: 'Please login to your WoW character and then restart Global.Honorbuddy.' Below this, there is a 'Running:' section with an 'Attached to' label. Underneath, there are fields for 'Accountname' and 'Charactername', each with a corresponding 'Load Profile' and 'Start' button. At the bottom, there are 'Username' and 'Password' fields (with 'test' and 'xxxxxx' respectively) and a 'Login' button. A 'State' label is at the very bottom.</p>	 <p>The screenshot shows the 'Options' tab. It contains several input fields: 'Foodname', 'Drinkname', 'Mount name', and 'Pulldistance' (set to 0). There are four checkboxes: 'Loot Mobs' (checked), 'Skin Mobs', 'Stop Botting On Inventory Full', and 'Use Mount'. A 'MailRecipient' field is at the bottom.</p>	 <p>The screenshot shows the 'Meshes' tab. It contains several buttons: 'Load Mesh', 'Start Mapping', 'Save Mesh', 'Clear Mesh', 'My Position', 'Remove Nearby', and 'Show Target Info'. There is also a checked checkbox for 'Ask for confirmation to remove this' and an empty rectangular area at the bottom.</p>
<p>Login – user your Username to login or use test/t3st for the Trial Load Profile – Loads your Profile Start – Starts Honorbuddy</p>	<p>Set the options you need to be set, let all other unchecked and unfilled. Pulldistance 10 - 30</p>	<p>This is for building own meshes and profiles. More about it: http://forum.gatherbuddy.de/index.php/topic,2685.0.html You can login in the forums with your HB username&pass</p>

Honorbuddy detects spells, your class and all important things automated, so there are only these things to set up.